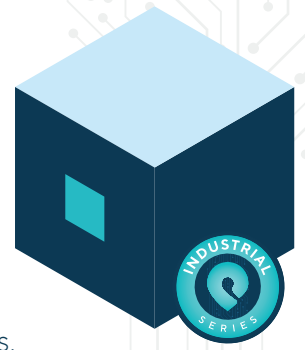


pozyx®

GATEWAY



The *Pozyx Gateway* is the beating heart of your real-time locating system. **It processes all information from the Anchors and Tags** and gives you access to **real-time and historical data** to surface smart insights that improve your business.

It also comes with a web app to let you easily set up, plan, and configure your system, as well as see powerful analytics right at your fingertips.



Discover Incredible Accuracy with the Pozyx Positioning Engine

The Pozyx Positioning Engine translates the information from Anchors & Tags into super-accurate real-time positioning data.

The engine supports different protocols seamlessly: both TWR (Two Way Ranging) and TDoA (Time Difference of Arrival) are available for maximum flexibility. The Pozyx Positioning Engine also uses proprietary algorithms to make real-time positioning data even more reliable. What's more, Pozyx harnesses cutting-edge, patent-pending technology to take accuracy to the next level.

Properties

MECHANICAL

Dimensions	210 mm (w) x 125 mm (d) x 77 mm (h)
Weight	1,9 kg
Mounting	VESA Mount

POWER

DC Input	+9-36V
AC Input	External adapter 100 / 240V ; AC-DC 84W

ENVIRONMENT

Storage Temp.	-20°C to +70°C
----------------------	----------------

POWER	CE / FCC class A
--------------	------------------

Specifications

Positions	1000 updates per second
CPU	i5
Memory	1x DDR4 SODIMM socket, Max. 4GB
Storage	SSD
I/O Ports	1x Uplink Port 4x Anchor Network Ports 2x USB 3.0 1x HDMI
Optional Modules & Accessory	3G Antenna



POZYX TAG



ANCHOR NETWORK



PoE SWITCH

YOU ARE HERE



POZYX GATEWAY



POZYX CLOUD



CUSTOMER APPLICATION



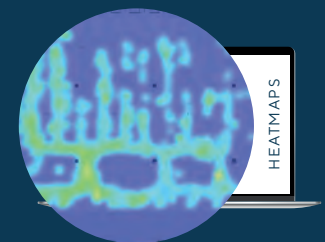
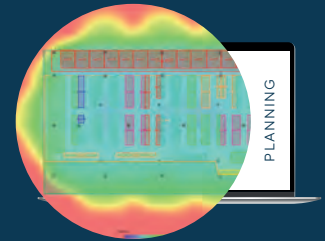
MQTT



Web App

Get started with your real-time location system in 1-2-3 thanks to the Gateway's user-friendly built-in web app.

- **Plan your Anchors** with ease and predict performance
- **Make deployment easy** and save time with user-friendly tools
- **Easily validate your setup** after installation is complete
- **Perform maintenance tasks** right from the web app
- **Get access to all information in real-time** with our MQTT & HTTP API
- **Map your floorplan** with our visualization tools to get a crystal-clear view of your business
- **Create zones** with a few clicks
- **See Anchor information** and get a network topology
- **Configuring your system** is easy with clear settings
- **Get a bird's eye view of every tag**, anchor and gateway right in the app
- **Make user management easy** with roles: owners, managers, or guests



Analytics App

The Pozyx Analytics app gives you deep insights into your real-time system so you can make data-driven decisions to take your business to the next level. With user-friendly ways to look at your data, the analytics app opens up new perspectives. A software license is required to activate analytics.

- **Heatmaps** let you see where things and people go to spot bottlenecks, **see congestion, track better routing, and more**
- With **spaghetti charts**, you can track and trace people or assets in **real-time and historically**
- **Zone analytics** let you define discreet zones to track **how things move** throughout your production process or warehouse
- Use **time budgets** to easily register working hours or calculate **time spent per different zone** or step of a production process
- The **Analytics HTTP API** makes it easy and simple to **integrate smart data** into your own systems or **interface with third-party systems or platforms**

Contact

GENERAL INQUIRY
info@pozyx.io

SALES DEPARTMENT
sales@pozyx.io

TECHNICAL SUPPORT
support@pozyx.io

Designed & Made in **Belgium**
by **Passionate Engineers**



Accurate positioning.

VRIJDAGMARKT 10/201
9000 GENT - BELGIUM



FACEBOOK
@pozyx



LINKEDIN
@pozyx



INSTAGRAM
@pozyxlabs



TWITTER
@pozyxlabs